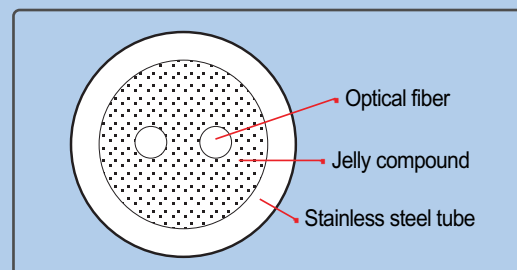
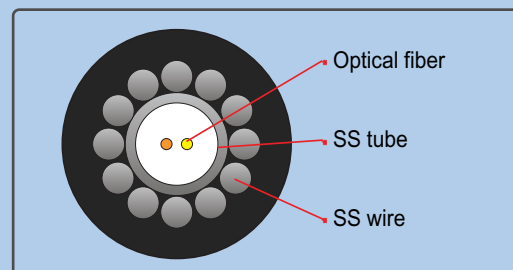


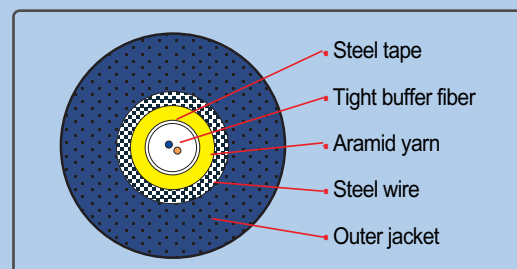
### Sensing Cables



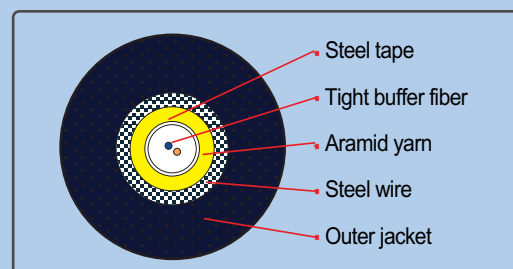
**Stainless steel loose tube type**



**Stainless steel wire armored type**



**Steel tape and wire armored type**



**Spiral steel type**



### DTS Series



TS3000



TS3000M



FD3000

Rack System

LEA-TS3000-02

## Distributed Temperature Sensing System [DTS]

[www.fiberpro.com](http://www.fiberpro.com)

# TS3000



# Distributed Temperature Sensing System [TS3000]

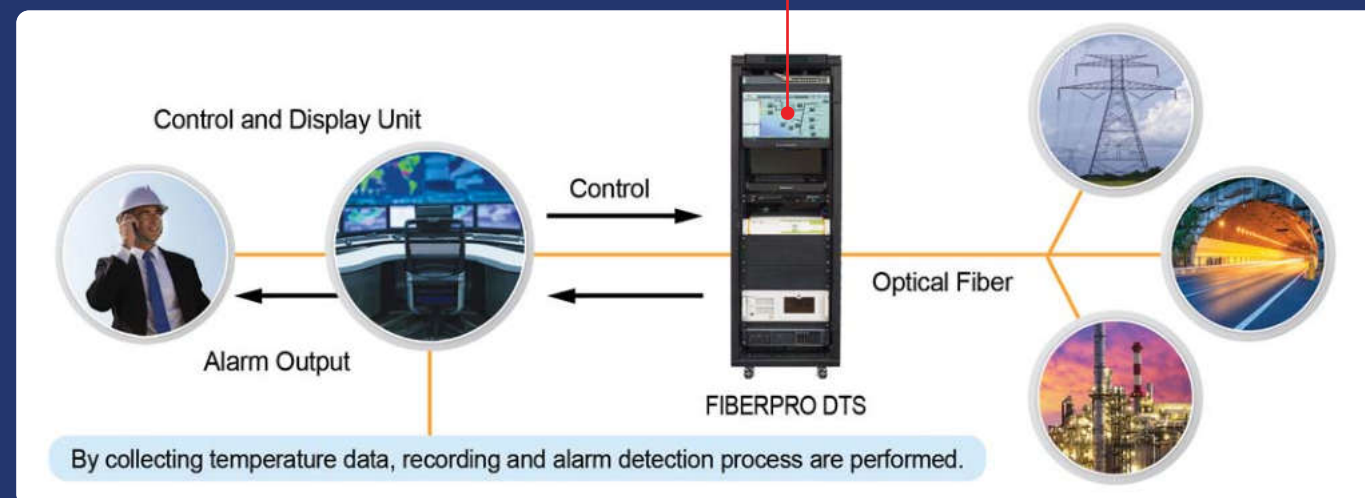
www.fiberpro.com

FIBERPRO's Distributed Temperature Sensing (DTS) System, TS3000, measure ambient temperatures along the entire optical fiber cable which is functioning as linear sensor. TS3000 provides excellent flexibility to meet client s requirements in various applications.

## Features

- Raman scattering based DTS
- Max. 16 channels.
- High temp. accuracy.
- Wide temp. sensing range.
- Insensitive to the electromagnetic interference (EMI)

## System Configuration



## Applications

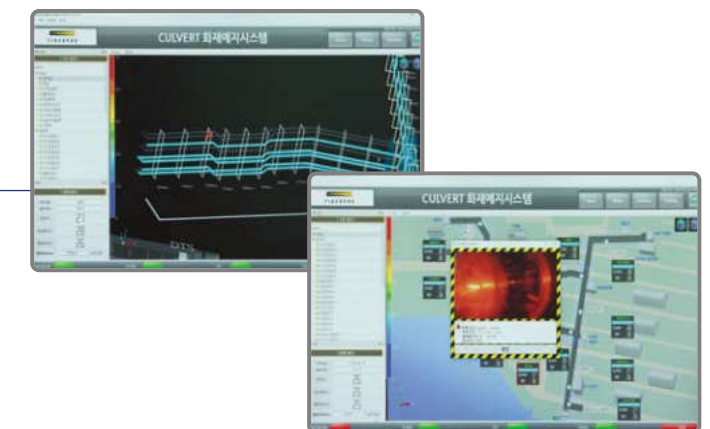
- Tunnel & Large facility fire surveillance
- Power plant & Tower temperature monitoring
- Factory temperature state monitoring
- Oil & Gas pipeline surveillance of leaks
- Geothermal temperature monitoring
- Others



## Specifications

Performance	
Distance Range	5 km, 10 km <sup>0)</sup>
Measurement Time	10 ~ 600 sec
Temperature Resolution (1 $\sigma$ )	< 0.5 $^{\circ}$ C <sup>1)</sup>
Temperature Accuracy	< $\pm$ 2 $^{\circ}$ C (P to P) <sup>2)</sup>
Minimal Spatial Resolution	< 2 m @ 2.3 km
Minimum Sampling Interval	0.5 m, 1 m
Sensing Temperature Range	-200 $^{\circ}$ C ~ +700 $^{\circ}$ C <sup>3)</sup>
Hardware	
Number of Channel	1, 2, 4, 8, 13, 16
Sensing Fiber Type	MMF 50 / 125 um (Graded index)
Connector Type	E-2000/APC, FC/APC or SC/APC
Operating Temperature	-20 ~ +60 $^{\circ}$ C
Storage Temperature	-40 ~ +85 $^{\circ}$ C <sup>4)</sup>
Electrical Power	AC 100 ~ 240 V, < 250W Typ.
Dimensions (W x D x H)	600 mm x 1000 mm x 1800 mm (Rack cabinet) 445 mm x 435 mm x 177 mm (TS3000 only)
Weight	< 10 kg
Certification	KC (including KFI), CE
Interfaces	LAN, RS-232 (Data reading only)

- 0) Ask us for longer distance
- 1) Measurement time 600 sec, standard deviation over distance
- 2) Measurement time 60 sec
- 3) Depending on sensing fiber coating material
- 4) Non-condensing



## Ordering Code

TS3000 - (1) - (2) - (3) - (4)

1. Distance  $\Rightarrow$  5 km(5), 10 km(10)
2. The number of channel  $\Rightarrow$  1ch(1), 2ch(2), 4ch(4), 8ch(8), 13ch(13), 16ch(16)
3. Port location  $\Rightarrow$  Front(F), Rear(R)
4. Connector type  $\Rightarrow$  E-2000/APC(E/A), FC/APC(F/A), SC/APC(S/A)